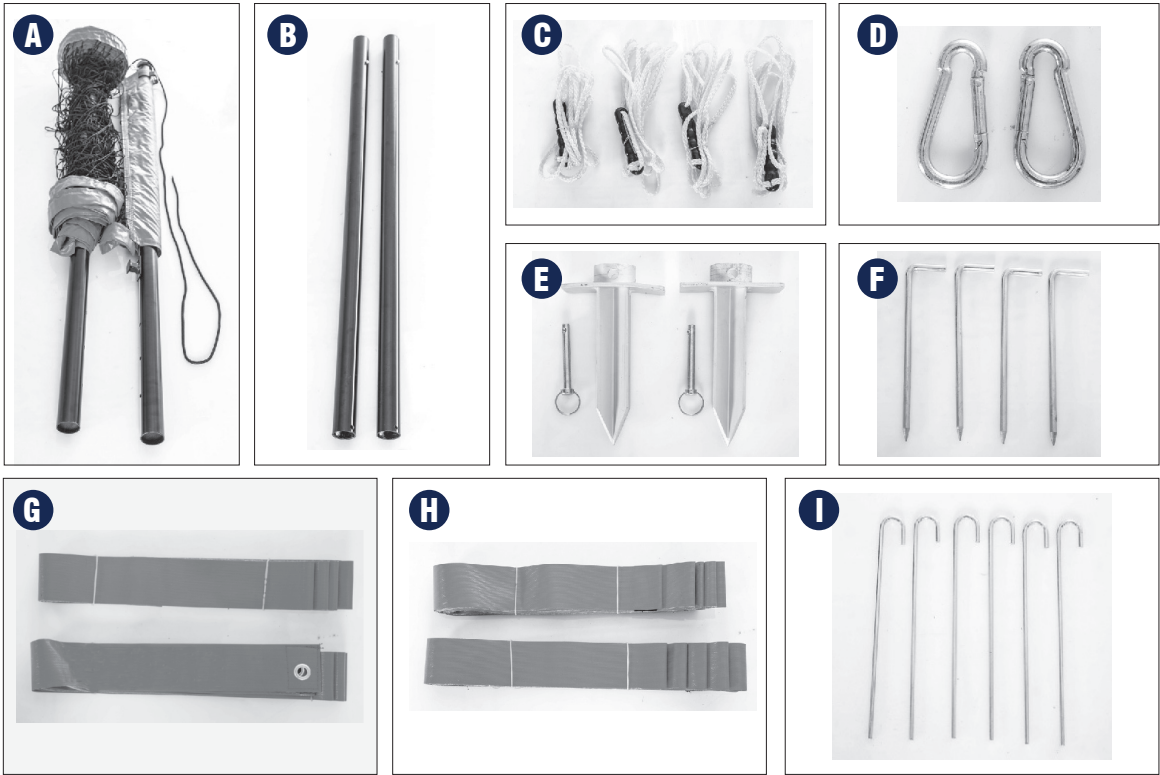




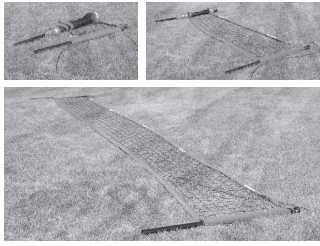
Volleyball Set Instructions

Part	Quantity	Description
A	1	Net Assembly
B	2	Poles
C	4	Anchor Ropes
D	2	Carabiners
E	2	Pole Stakes with Pins
F	4	Rope Stakes
G	2	Long Boundary Markers
H	2	Short Boundary Markers
I	6	Boundary Stakes

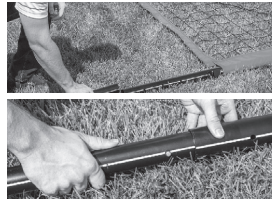
Tools required (not included): Rubber Mallet



Volleyball Set Instructions

HART
SPORT


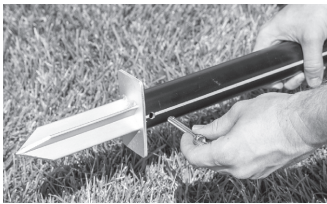
1. Lay out **Net Assembly (A)** so it is flat on the ground.



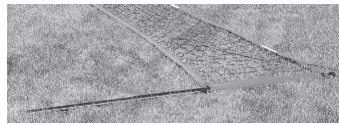
2. Insert 1 **Pole (B)** into one end of **Net Assembly (A)**, until push-pin pops into place. Ensure the white line on net assembly matches up with the white line on the pole.



3. Repeat Step 2 with other side of **Net Assembly (A)**.



4. Insert 1 **Pole Stake with Pin (E)**, with pin out, into the bottom of the pole assembly. Insert the pin to secure to the end of the **Pole (B)**.



5. Repeat Step 4 with other side of **Net Assembly (A)**.



6. Attach 1 **Carabiner (D)** to 2 **Anchor Ropes (C)** through the large loops with handles, and the eyelet at top of **Net Assembly (A)** pole.



7. Repeat Step 6 with other side of **Net Assembly (A)**.



8. Insert 1 pole assembly into the ground.



9. With assistance, extend 1 **Anchor Rope (C)** on end of assembly and insert 1 **Rope Stake (F)** into small loop end. Repeat step for the other anchor rope on the same side. For the best stability, insert rope stakes into the ground at an angle. Secure into ground with a rubber mallet.



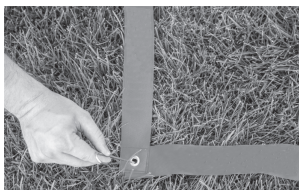
10. Repeat 8-9 on the other side of Assembly.



11. With 1 person on either side of the net, pull handles on **Anchor Ropes (C)** downward to tighten the net.



12. Pull thin rope at the top of the **Net Assembly (A)** until net is taut, and wrap around tightening bracket.



13. Lay out 2 **Long Boundary Markers (G)** and 2 **Short Boundary Markers (H)** and secure with 7 **Boundary Stakes (I)**

Assembly of your
Portable Volleyball Set
is now complete.