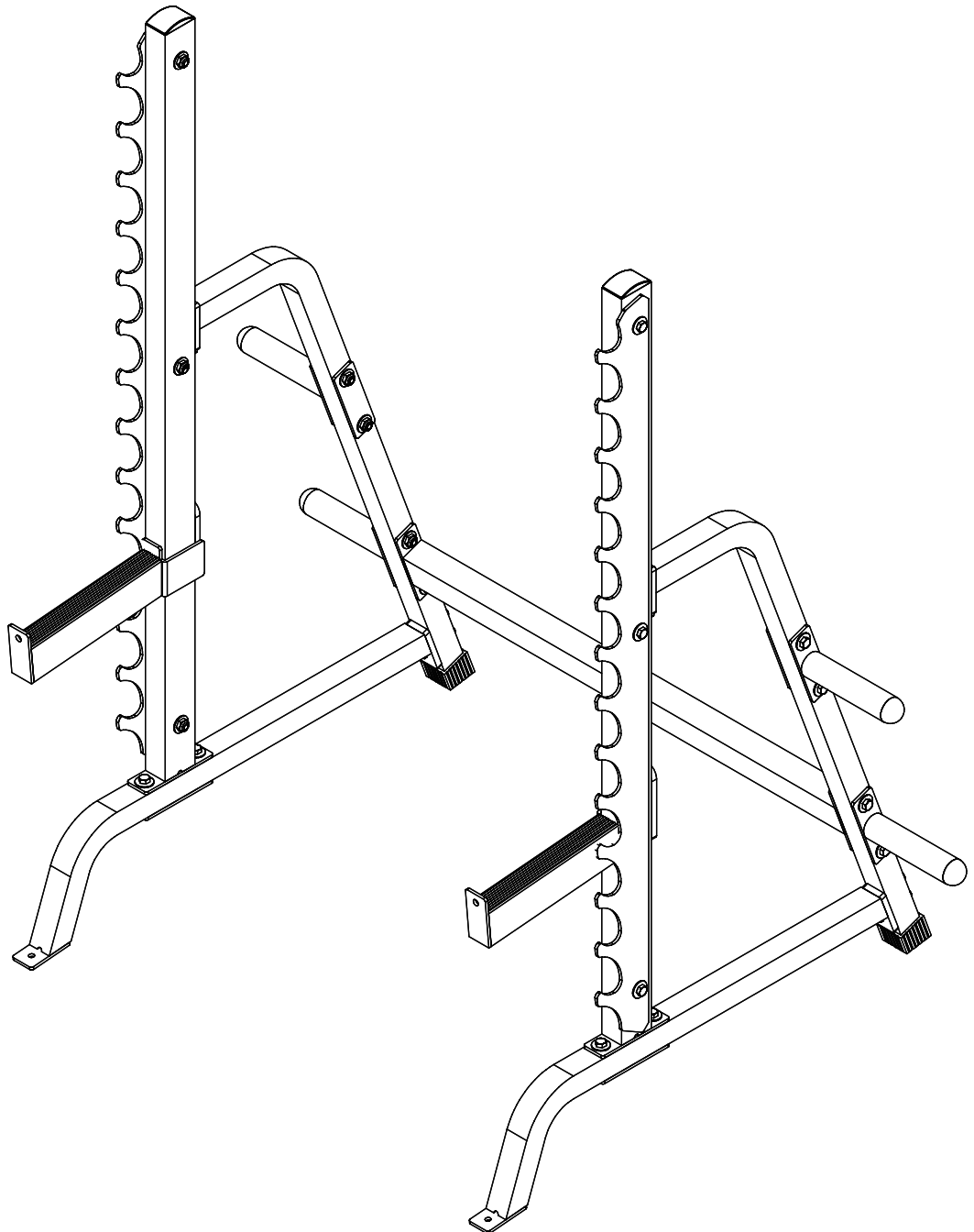




Multi Press Station Assembly Guide





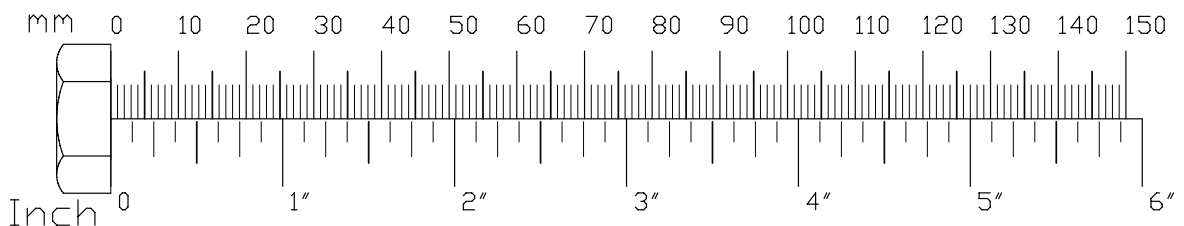
Multi Press Station Assembly Guide

Be careful to assemble all components in the sequence they are presented.
Finger tighten all hardware in this step unless otherwise noted.

STEP 1 Right Side Assembly

NOTE: The right side of the 6-319 will be assembled in Step 1. Step 2 covers the left side assembly.

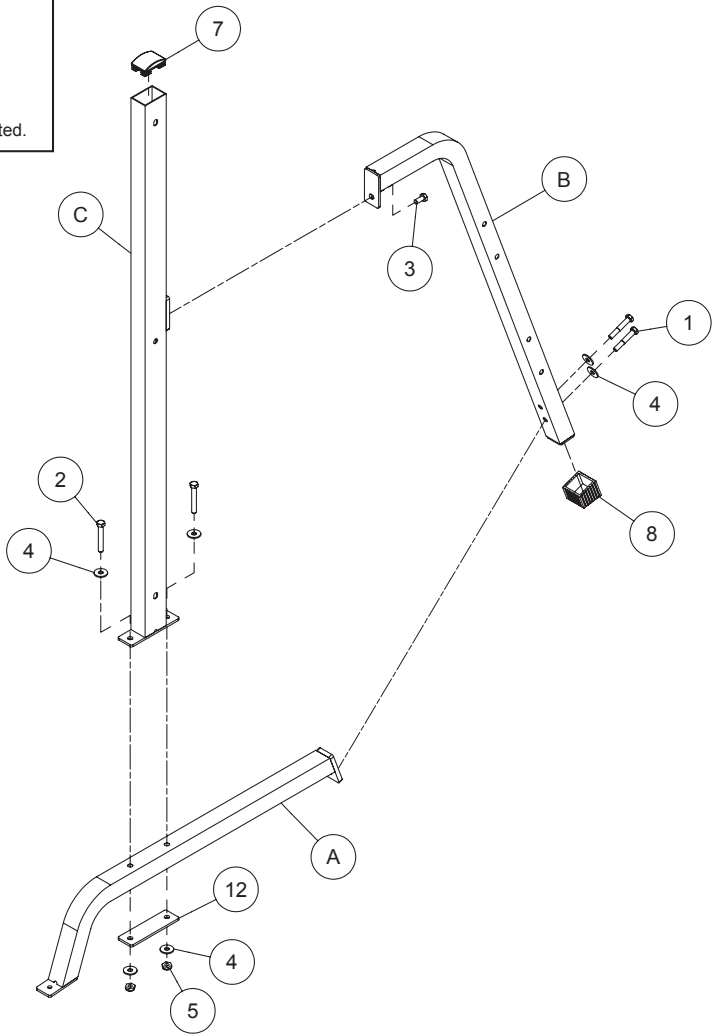
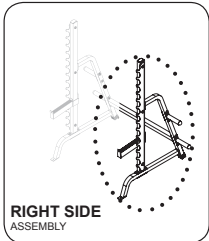
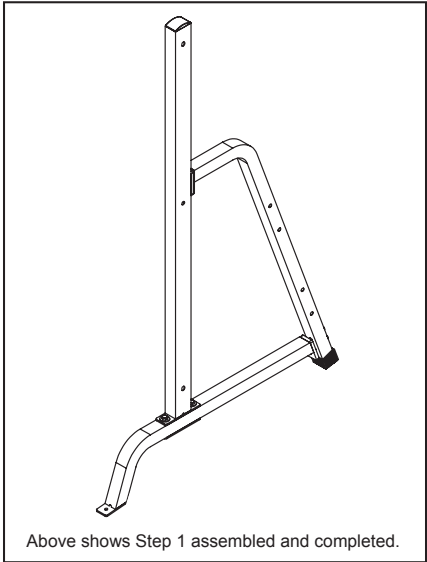
- A. Connect Upright Frame (C) and Flat Plate (12) to Base Frame (A) using:
Two 2 (M12x80 hex head bolt)
Four 4 (M12 washer)
Two 5 (M12 nylon nut)
- B. Connect Side Frame (B) to Upright Frame (C) and Base Frame (A) using:
One 3 (M12x25 hex head bolt)
Two 1 (M12x70 hex head bolt)
Two 4 (M12 washer)
- C. Insert Convex End Cap (7) into Upright Frame (C).
- D. Insert Foot Cap (8) onto Side Frame (B).
- E. Carefully lay the completed Right Side Assembly on the floor.





Multi Press Station Assembly Guide

Step 1





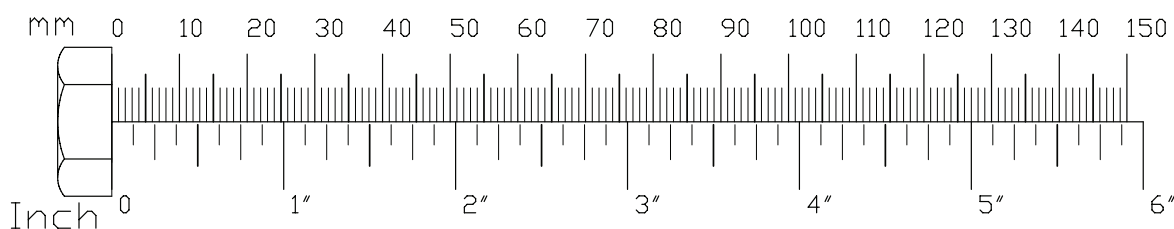
Multi Press Station Assembly Guide

Be careful to assemble all components in the sequence they are presented.
Finger tighten all hardware in this step unless otherwise noted.

STEP 2 Left Side Assembly

NOTE: The right side of the 6-319 will be assembled in Step 1. Step 2 covers the left side assembly.

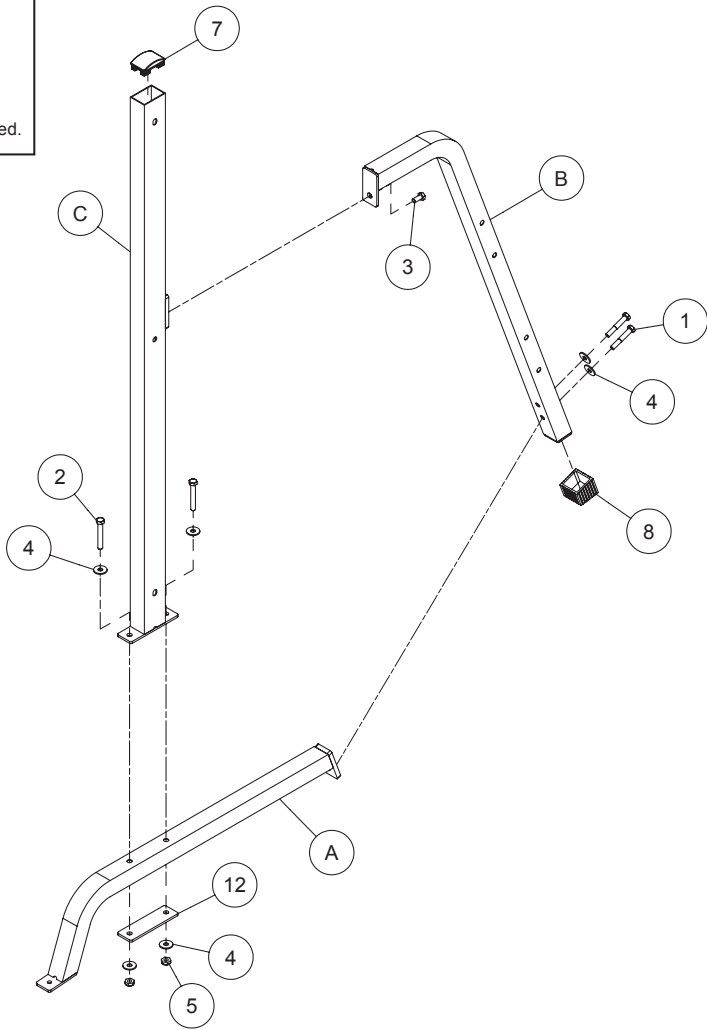
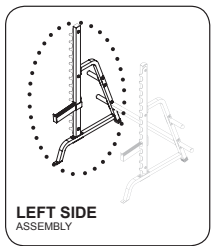
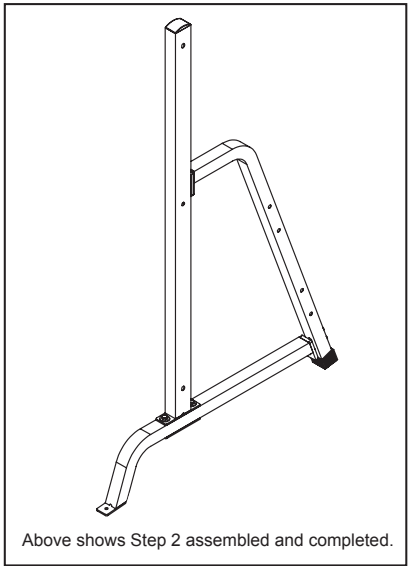
- A. Connect Upright Frame (C) and Flat Plate (12) to Base Frame (A) using:
Two 2 (M12x80 hex head bolt)
Four 4 (M12 washer)
Two 5 (M12 nylon nut)
- B. Connect Side Frame (B) to Upright Frame (C) and Base Frame (A) using:
One 3 (M12x25 hex head bolt)
Two 1 (M12x70 hex head bolt)
Two 4 (M12 washer)
- C. Insert Convex End Cap (7) into Upright Frame (C).
- D. Insert Foot Cap (8) onto Side Frame (B).
- E. Carefully lay the completed Left Side Assembly on the floor.
- F. Proceed to Step 3 to complete the assembly of the 6-319.





Multi Press Station Assembly Guide

Step 2





Multi Press Station Assembly Guide

**Be careful to assemble all components in the sequence they are presented.
Finger tighten all hardware in this step unless otherwise noted.**

STEP 3

A. Connect the Right Side Assembly and the Left Side Assembly with Cross Support (D) and two Weight Horns (G) using:

Two 2 (M12x80 hex head bolt)

Four 4 (M12 washer)

Two 5 (M12 nylon nut)

B. Wrench tighten all hardware that has been previously finger tightened and.

C. Connect Weight Horns (G) and Flat Plate (12) to the Left Side Assembly using:

Two 2 (M12x80 hex head bolt)

Four 4 (M12 washer)

Two 5 (M12 nylon nut)

D. Connect Weight Horns (G) and Flat Plate (12) to the Right Side Assembly using:

Two 2 (M12x80 hex head bolt)

Four 4 (M12 washer)

Two 5 (M12 nylon nut)

E. Connect Right Lift Off Frame (J) to the Right Side Assembly using:

Three 6 (M12x75 hex head bolt)

Six 4 (M12 washer)

Three 5 (M12 nylon nut)

F. Connect Left Lift Off Frame (I) to the Left Side Assembly using:

Three 6 (M12x75 hex head bolt)

Six 4 (M12 washer)

Three 5 (M12 nylon nut)

G. Wrench tighten all remaining hardware.

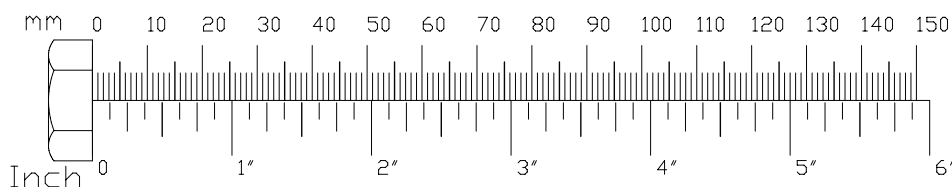
H. Insert Rubber End Cap (13) into all Weight Horns (G).

I. Attach Rubber Bar Catch (9) to Right Safety Bar (E) and Left Safety Bar (F).

J. Attach two 45mm x 45mm Pad (10) to Right Safety Bar (E) and Left Safety Bar (F).

K. Attach Pad 45mm x 70mm (11) to Right Safety Bar (E) and Left Safety Bar (F).

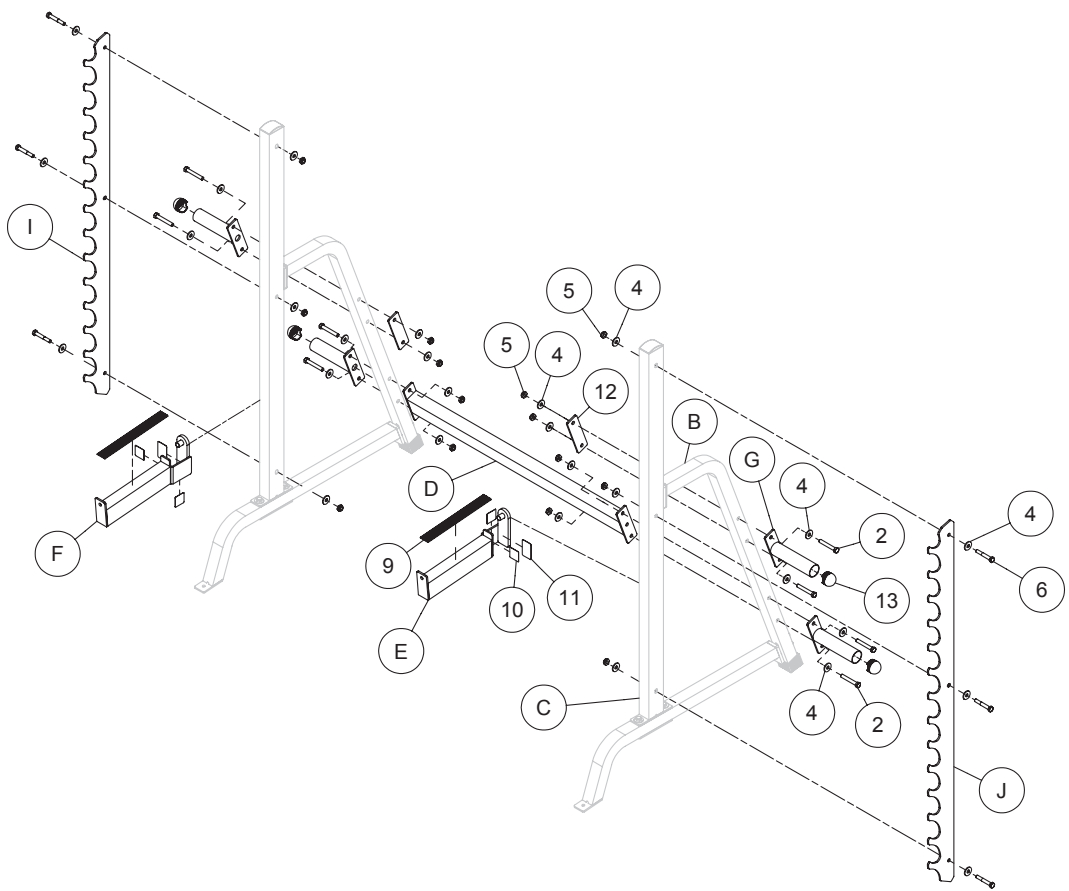
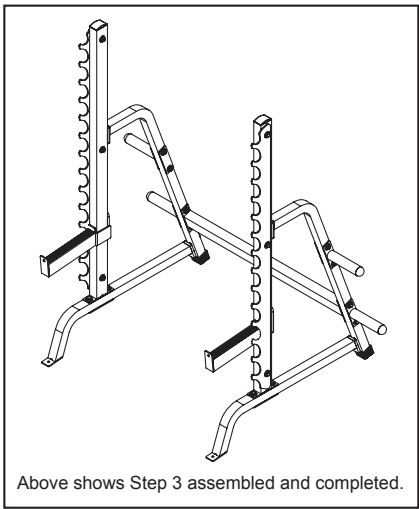
L. Congratulations! The installation of your 6-319 is complete.





Multi Press Station Assembly Guide

Step 3





Multi Press Station Assembly Guide

Mainframe Parts List

Part#	Qty	Description
A	2	BASE FRAME
B	2	SIDE FRAME
C	2	UPRIGHT FRAME
D	1	CROSS SUPPORT
E	1	RIGHT SAFETY BAR
F	1	LEFT SAFETY BAR
G	4	WEIGHT HORNS
I	1	RIGHT LIFT OFF FRAME 130mm x 6mm T x 1610mm L
J	1	LEFT LIFT OFF FRAME 130mm x 6mm T x 1610mm L

Part numbers are required when ordering parts.



Multi Press Station Assembly Guide

Hardware List

Part#	Qty	Description		
1	4	HEX HEAD BOLT	M12x70	
2	12	HEX HEAD BOLT	M12x80	
3	2	HEX HEAD BOLT	M12x25	
4	40	WASHER	M12	
5	18	NYLON NUT	M12	
6	6	HEX HEAD BOLT	M12x75	
7	2	CONVEX END CAP	Φ50 mm x 75mm	(9211-084)
8	2	FOOT CAP	2" x 2"	(9212-018)
9	2	RUBBER BAR CATCH	38mm x 325mm	(9310-042)
10	4	PAD	45mm x 45mm	(9440-067)
11	2	PAD	45mm x 70mm	(9440-068)
12	4	FLAT PLATE	50 x 6T x 170	(8312-091)
13	4	RUBBER END CAP	Φ49.5	(9211-074)
14	2	NUMBER STICKER		(9440-072)
15	1	RIGHT STICKER		(9440-053)
16	1	LEFT STICKER		(9440-054)
17	1	WARNING STICKER		(9440-105)
18	1	MAINTENANCE LABEL		(9440-103)
19	1	HART-SPORT LOGO		(9440-229)
20	2	HART-SPORT LOGO		(9440-230)
21	1	WEIGHT HORN WARNING STICKER		(9440-217)

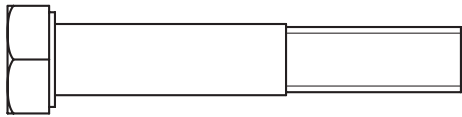
Part numbers are required when ordering parts.



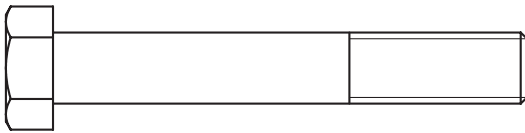
Multi Press Station Assembly Guide

Hardware (To Scale)

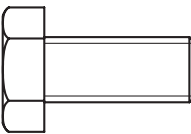
Part# 1 M12x70 Hex Head Bolt Qty. 4



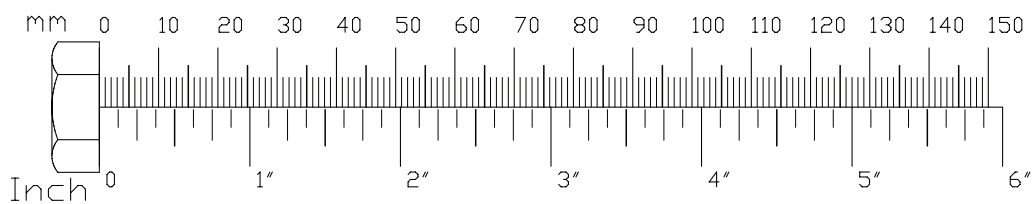
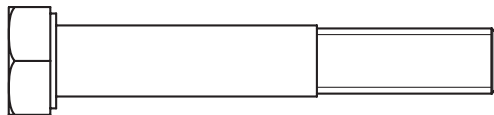
Part# 2 M12x80 Hex Head Bolt Qty. 12



Part# 3 M12x25 Hex Head Bolt Qty. 2



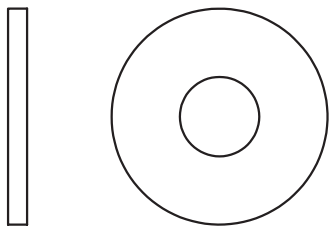
Part# 6 M12x75 Hex Head Bolt Qty. 6





Multi Press Station Assembly Guide

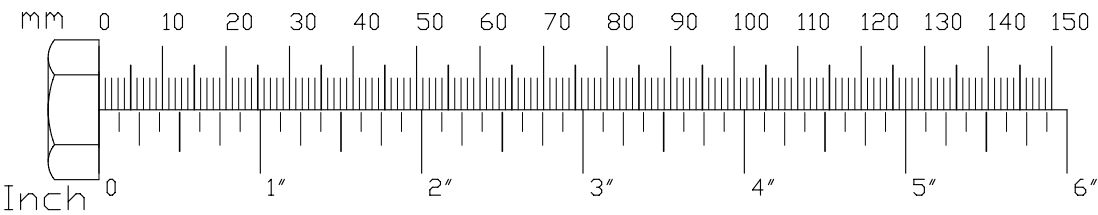
Hardware (To Scale)



Part# 4 M12 Washer Qty. 40



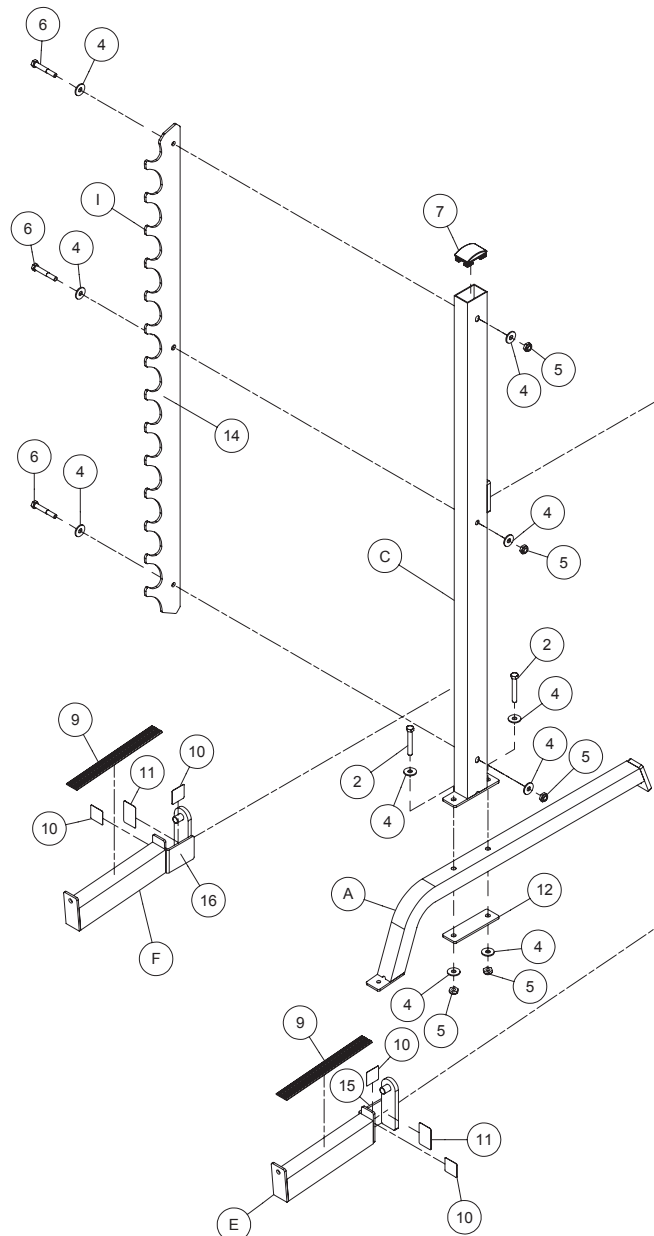
Part# 5 M12 Nylon Nut Qty. 18





Multi Press Station Assembly Guide

Exploded View Diagram





Multi Press Station Assembly Guide

Exploded View Diagram

